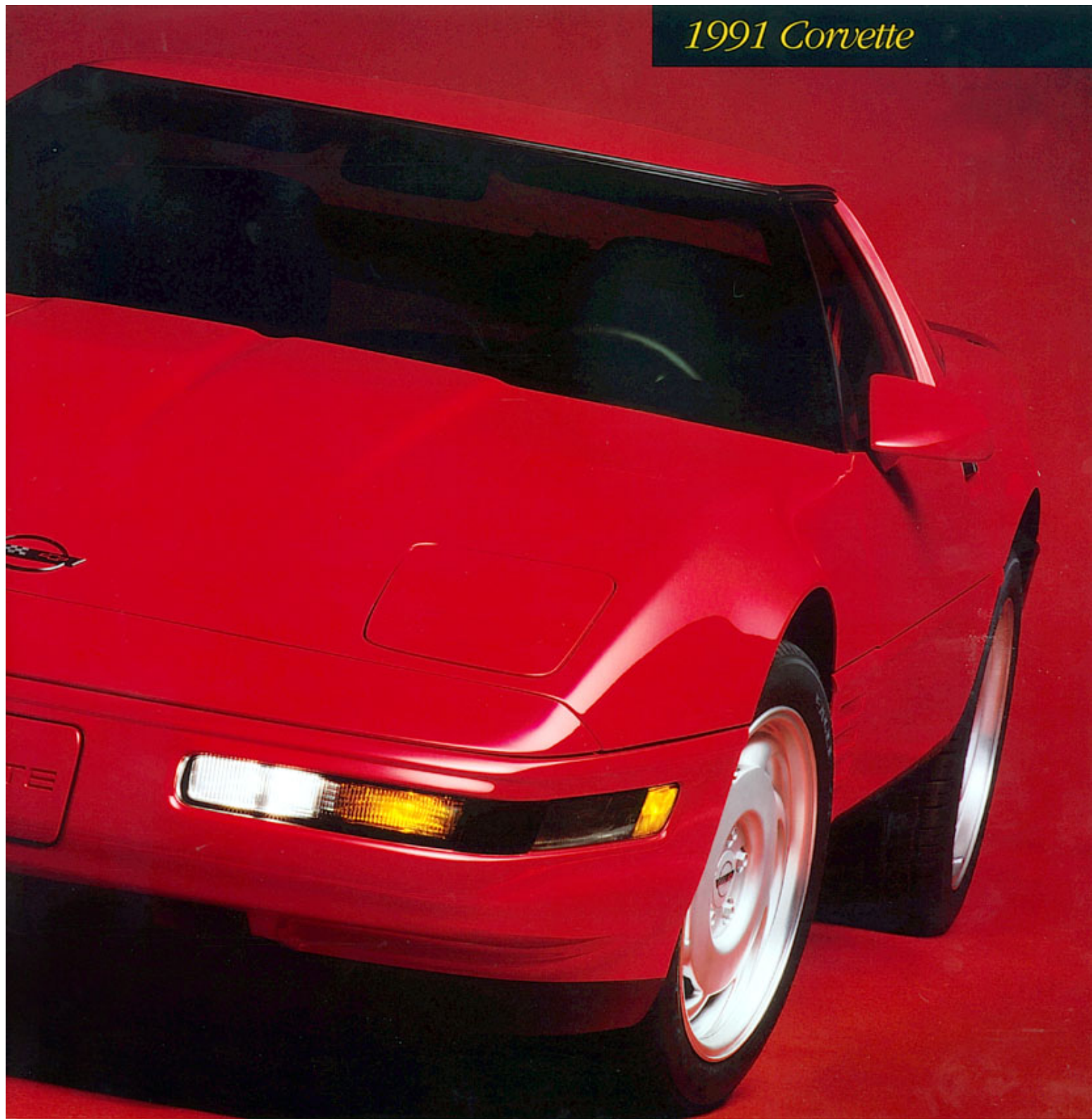


1991 Corvette





Contents

*Welcome to Corvette
for 1991.*

- 2 Corvette Heritage
Since 1953...the legendary American sports car.
- 6 Corvette 1991
The style is new, but classically Corvette.
- 8 The Coupe
This is what "grand touring" is all about.
- 12 Inside Corvette
A sporty (and luxurious) environment for two.
- 16 The Convertible
As different from other convertibles as Corvette is different from other cars.
- 20 Corvette Performance
The numbers speak volumes. One drive will say more.
- 24 Features and Options
The completely equipped sports car that's easy to personalize.
- 32 Additional Information

Corvette Heritage

Nineteen ninety-one
looks like another
very good year.



2



3



Corvette 1991

*Unmistakably new
appearance.*

*Unmistakably
Corvette.*

From any perspective, Corvette for 1991 is a treat for America's car enthusiasts.

Both coupe and convertible models share a new look — a revised front bumper/facia with wrap-around cornering/fog lamps, new horizontal side louvers, wider body-color side moldings and bolder, more massive rear styling (the trademark quad rear lamps are now rectangular). New 17" cast-aluminum wheels are the final touch.

This anything-but-subtle style promises performance — something the '91 Corvette delivers in full measure. Beneath this svelte fiberglass skin is a fully independent suspension, the choice of a six-speed manual or four-speed automatic transmission and the race-proven 5.7 Liter V8 with Tuned-Port Fuel Injection and lightweight aluminum cylinder heads.

One of the most advanced four-wheel anti-lock braking systems available in any production automobile (Bosch ABS IIS) is standard. When called upon to do so, the system can adjust brake pressure as rapidly as 15 times per second, a rate even the most skilled professional driver cannot attain. Bosch ABS IIS is combined with four-wheel power discs for up to 1.0g of stopping power.

Bilstein Selective Ride Control, the innovative suspension option introduced on the 1990 Corvette Coupe, is now available on both Coupe and Convertible. This system allows the driver to select from one of three levels of ride firmness (Touring, Sport or Performance).

There is another component that sets Corvette apart from other two-seaters: luxury. Standard equipment includes air conditioning, Delco AM/FM stereo with cassette tape player, leather-wrapped Comfortilt steering wheel, power door locks, power windows—the list goes on. Base-coat/clear-coat paint provides a "wet look" shine. And, of course, Corvette's fiberglass body panels will never rust.

Luxury options include leather-trimmed multi-adjustable sport seats and a 200-watt Delco/Bose ster-

eo with digital compact disc player, cassette tape player and a Speed Compensated Volume Control that increases volume automatically as vehicle speed increases. An override switch cancels this function if so desired.

Other technology has been incorporated to help reduce insurance rates and make the '91 Corvette an easier-to-own sports car. The standard PASS-Key® (Personalized Automotive Security System) is the most sophisticated theft-deterrent system Chevrolet has ever offered. PASS-Key is a special ignition key system utilizing a module with a resistor decoder and an ignition key with a pellet of specified resistance. If the resistance does not match the decoder, any attempt to start the car is thwarted. The standard driver's-side Supplemental Inflatable Restraint system (air bag) and four-wheel anti-lock brake system may also qualify you for comprehensive insurance discounts.

These are a few of the reasons why Corvette is one of the world's finest sports cars. There is one more: quality. The 1991 Corvette is backed by extensive, rugged development testing at the General Motors Proving Grounds.

Recent endurance testing (supervised by the United States Auto Club and confirmed by the Federation Internationale de l'Automobile) offers more evidence of Corvette quality. Two specially modified



1990 Corvette Coupes smashed three world endurance/speed records and set nine international class standards at the Firestone/Bridgestone track in Fort Stockton, Tex-

as. The new records are for 5000 kilometers and 5000 miles, including a new 24-hour speed record (175.8 MPH average). The only stops were for gas, tires and driver changes.

The '91 Corvette awaits one final test — yours, on your favorite stretch of highway.

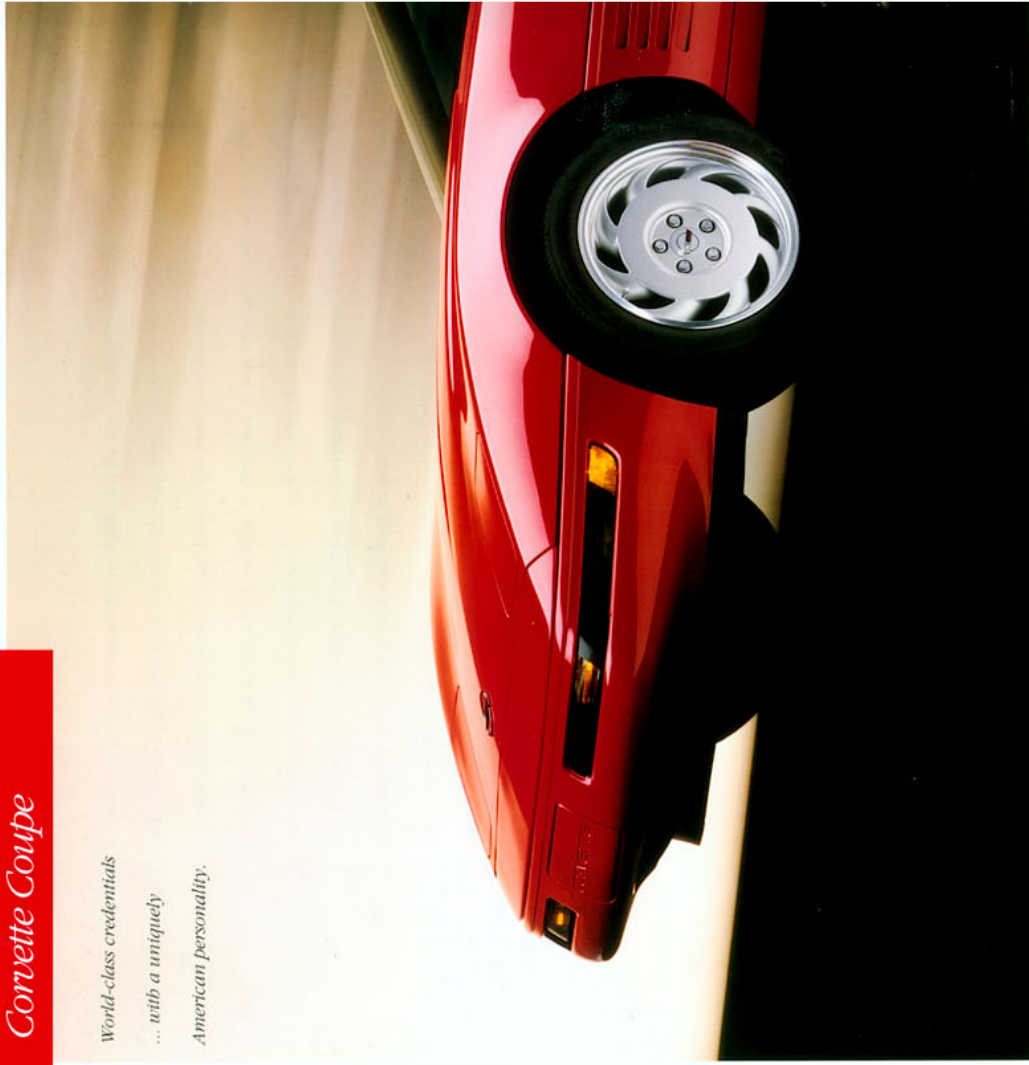
More proof of Corvette quality. Two specially prepared 1990 Corvette Coupes set nine international endurance/speed records in USAC-sanctioned testing.

Corvette Coupe

World-class credentials

... with a uniquely

American personality.



For those who seek an all-out V8-powered sports car that is the envy of automakers the world over, Corvette Coupe is often the preferred choice. And no wonder.

In Sports Car Club of America-sanctioned Showroom Stock Series competition, the Corvette Coupe (with special modifications) is a force to be reckoned with. Racing technology has clearly influenced the design of the current-generation Corvette, and what Corvette engineers learn at the track is quickly reflected in the Corvette you buy from Chevrolet and drive on the street.

The performance of Corvette Coupe is enhanced for 1991 by 17" cast-aluminum wheels, P275/40ZR-17 Goodyear Eagle unidirectional high-performance tires, limited-slip rear differential, and your choice of a six-speed manual transmission or 4-speed automatic with overdrive.



The standard removable roof panel adds convertible-like flair to Corvette Coupe when you desire it.

Bilstein Selective Ride Control is an innovative suspension option designed for everyday driving. This computerized system allows the driver to select from one of three shock absorber damping levels (Touring, Sport or Performance) via a console-mounted switch. It is programmed for six automatic gradations of firmness within each mode, depending on vehicle speed.

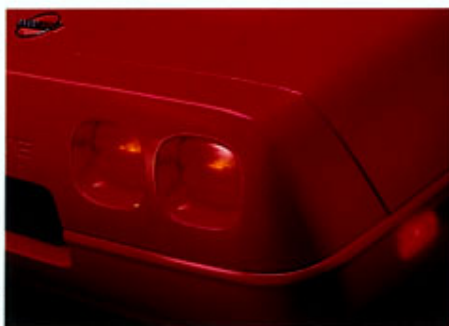


Restyled side louvers enhance the performance image of Corvette.

Also available on Corvette Coupe: a special Performance Axle Ratio (requires an optional engine oil cooler).

Corvette Coupe has also earned a reputation as a highly refined grand touring machine. In a Corvette, even the drive across town or the daily commute to work is a time to be enjoyed, thanks to the accomplished engineering and a long list of standard luxury features.

These features include air conditioning, electronic speed control, halogen fog lamps, front and rear cornering lamps, power windows, power door locks and a Delco AM/FM stereo with seek-scan, cassette tape player, and digital clock. A standard "delay" feature for accessories continues power to the entertainment system and power windows for up to 15 minutes after the ignition key is turned to "off" or until the driver's door is opened — whichever happens first. A power plug connection for a cellular phone is also standard. And when those summer weekends beckon (or whenever the spirit moves you), the one-piece removable roof panel may be lifted off for breezy open-sky motoring. A transparent roof panel (with blue or bronze tint) is available.



New quad tail lamps immediately identify this Corvette as the latest generation.

The Coupe features an all-glass lift-up rear hatch with remote release for convenient cargo loading. Luggage space is 12.6 cu. ft., enough for three large suitcases and two smaller overnight bags. A security shade is also provided. Two lockable storage compartments are located behind the seats.



Corvette Coupe's alluring dual nature (performance machine/grand touring car) is what makes it such a popular choice for so many enthusiasts. Whether your plans include a 1,000-mile tour or a night on the town, the Corvette Coupe is just fun to drive and ride in. And Corvette lets you express yourself with the choice of ten exterior colors (all lustrous base-coat/clear-coat), and a wide range of options, including a Delco/Bose sound system with digital compact disc player and stereo cassette tape player, power adjustable sport seats with power lumbar support and genuine leather trim (see pages 24-31 for more details).

Front cornering/parking lamps feature a "wraparound" design for '91.

Inside Corvette

*Where the marriage of
comfort and control is a
carefully considered
science.*



12



13

The optional leather sport seat includes power height and fore/aft adjuster, and power lumbar support feature.



terity here). The bucket seats are deeply contoured and feature quality cloths or supple optional leathers. The Comfortilt steering wheel is leather-wrapped. The Delco stereo systems are recognized as among the best available in any automobile. There are power controls for everything from windows to mirrors.

True luxury in a sports car, however, is the ability to make the driver feel as one with the car. Seats must help the driver stay securely in place during cornering. Those same seats should offer support and comfort for extended periods of time. Gages must be instantly readable without taking eyes off the road. All controls, from wipers to climate-control system, should be in easy reach.

Corvette is, by this more meaningful standard, a true luxury sports car with impressive comfort and unique style.

The standard fully reclining bucket seats are upholstered in sport cloth. Colors are Black or Saddle. Genuine leather seating surfaces (in Black, Blue, Gray, Red or Saddle) are optional. Corvette's ultimate comfort option is the leather Sport Seat interior shown above. Features include a six-way power adjuster plus power lumbar support.

The cockpit-style wraparound instrument panel communicates instantly and clearly to the driver. Instrumentation includes analog readouts for tachometer, water temperature, oil pressure, oil temperature and volts, and digital readouts for speed, instant average fuel economy and range.

Map light (located on the rearview mirror) is part of Corvette's standard interior courtesy lighting package.



Another important driver-information feature is an engine oil life monitor. It alerts the driver with a "Change Oil" light when an oil/filter change is recommended. A formula calculates engine oil tem-



perature and engine revolutions to decide actual oil life.

A low oil sensor is a new feature for 1991. It illuminates a "Low Oil" lamp in the Driver Information Center when the oil level is one quart low.

Corvette's acclaimed sound systems include a standard Delco AM/FM stereo with seek-scan, cassette tape player, digital clock and power antenna. Two Delco/Bose systems are available: one with cassette player, and one with cassette player and compact disc player. Both are world-class systems with 200 watts of power, six speakers (including two tweeters for excellent high-range sound), and speed-compensated volume that will automatically compensate for the increase in road noise levels of higher speeds (a feature you will appreciate when driving with the roof panel off or convertible top down).

The center console includes storage for both cassette tapes and compact discs. Other features are a coin tray, headlamps-on reminder, power windows, power door locks and power mirrors. Courtesy lights are located under the instrument panel, on the doors and in the cargo area.

A standard driver's-side Supplemental Inflatable Restraint system (air bag) is located in the steering wheel hub. The S.I.R. is designed to provide added protection for the driver in the event of a moderate to severe frontal collision. It is a supplemental system only. For maximum protection in frontal and all other collisions, both driver and passenger should be properly restrained with safety belts.

Simply put, the Corvette interior was designed by people who love to drive. And the happy result is a sports/GT car that will complement your own driving style precisely.

PASS-Key is the most sophisticated theft-deterrent system in GM history.



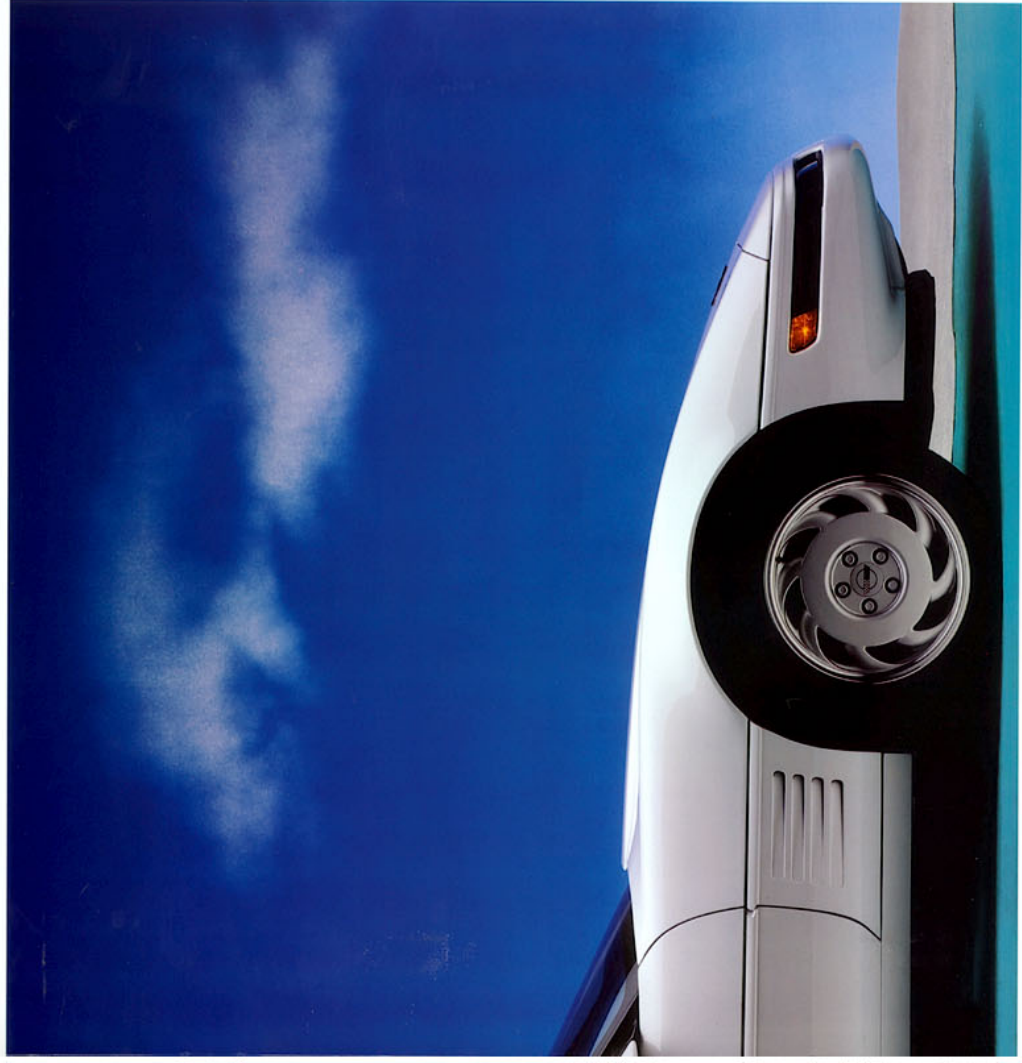
The Driver Information Center provides information regarding Corvette's various systems such as the anti-lock brake system, the Supplemental Inflatable Restraint system, Low Tire Pressure Warning System (optional) and Selective Ride Control (optional).

Corvette Convertible

*The slightly more
passionate approach to
high-performance
motoring.*



16



17

Corvette's convertible top is made of canvas or vinyl, depending on color selected.

For many sports car enthusiasts, there is but one body style to consider: the convertible, a.k.a, rag-top, droptop, roadster. The argument is compelling. After all, adding wind, sun and stars does tend to amplify the fun of a high-performance automobile.

The 1991 Corvette Convertible just may be the ultimate expression of this highly romantic breed. Consider this the slightly more intense Corvette, for more passionate souls. It is, too, the car most Americans have fantasized about owning. And the new-for-'91 styling only enhances the legend.



Historically, the Corvette Convertible has been one of autodom's best long-term investments. Vintage examples routinely sell for many times their original price. For example, it is not uncommon to see a mid-Sixties Corvette convertible or a "big-block" Sting Ray bring over \$50,000 at auction.

The restyled '91 opens a brand-new chapter in Corvette history, and there is no better time than right now to enjoy the style and spirit of America's premiere top-down sports car.

The performance technology and luxury of every Corvette is combined with the open-air appeal only a convertible can deliver. The standard 5.7 Liter V8 engine with Tuned-Port Fuel Injection is one of the most powerful V8s available in any production convertible.



The optional removable hardtop adds another dimension of style and convenience. An electric rear-window defogger is included.

Horsepower is 245 at 4000 RPM. In other words, this Corvette is guaranteed to rearrange your hairstyle.

Significantly, this is a factory-built convertible, manufactured to strict quality standards within the Bowling Green, Kentucky, Corvette plant. Features include a manually operated convertible top with integral headliner for enhanced sound deadening. Two lockable storage compartments are located behind the seats. There is additional storage space for small items in the lockable center console and

glove compartment, providing even more places for your belongings.

Five interior colors and ten exterior colors, including new Turquoise Metallic, Steel Blue Metallic and Medium Quasar Blue Metallic, are available for '91.

Choose from three top colors, depending on exterior color selected: Black (canvas), White (vinyl) or Saddle (canvas). See page 27 for information on available interior/exterior color combinations.



The soft top disappears below a fiberglass panel when lowered.

There is no unsightly boot to mar the top-down appearance.

An optional body-color removable hardtop is a popular option you may wish to consider. This lightweight (64-lb.) fiberglass hardtop features a cloth headliner and electric rear-window defogger. In addition to providing coupe-like quiet and comfort during cold-weather months, the hardtop gives the Convertible a whole new, highly formal appearance and added security when you want it.

Another option that recalls the early days of two-seat motoring is a factory-installed rear decklid carrier. The black-finished carrier adds both style and cargo capacity. This carrier is available exclusively on the Corvette Convertible.

There was a time (1953 through 1962) when every Corvette was a convertible. To many, this is still *the* Corvette. If your personal interpretation of "sports car" includes a top that goes down and brings you closer to the great outdoors, choosing this version of the 1991 Chevrolet Corvette will be one of the year's most rewarding decisions.

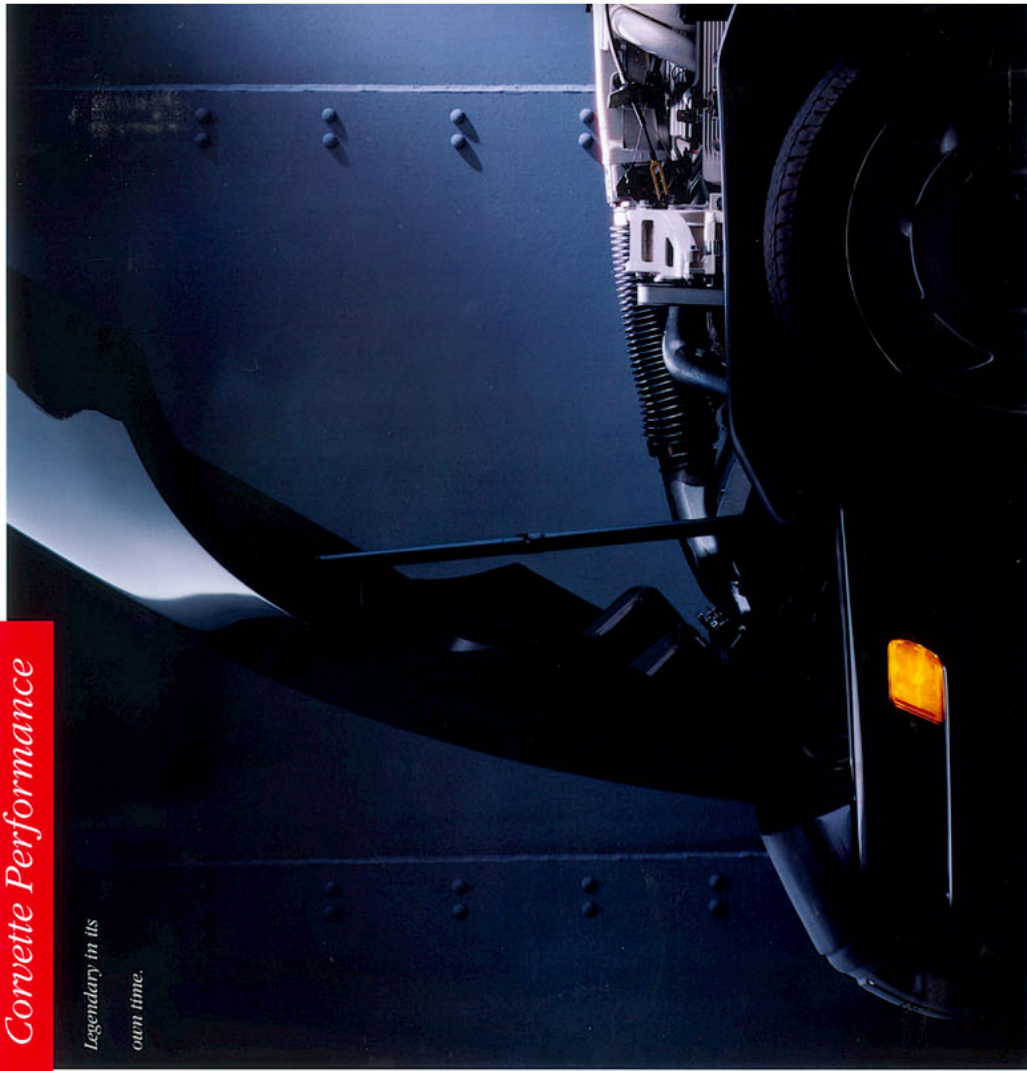


The optional black-finished luggage carrier is functional as well as good-looking.

The Convertible adds open-sky motoring to the many pleasures of Corvette ownership.

Corvette Performance

*Legendary in its
own time.*



20



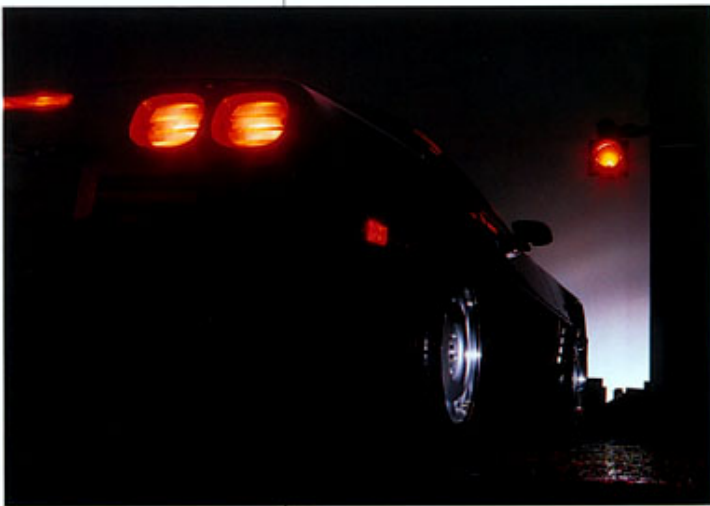
21

Corvette performance has always been something to talk about. In the late Fifties, the fuel-injected "283" put Corvette on equal footing with all-out race cars. And in the Sixties, high-revving "327 fuelies" and muscular "big-block" Sting Rays were fearsome machines on the street or track.

The 1991 Corvette continues that winning tradition, with a formidable 5.7 Liter V8 (350 cubic inches),

a choice of advanced 6-speed manual or 4-speed automatic transmissions and a competition-proven chassis design.

5.7 Liter V8 with Tuned-Port Fuel Injection This standard Corvette powerplant is widely regarded as one of the great engines of all time. Performance features include Tuned-Port Fuel Injection, lightweight aluminum cylinder heads, a high-lift camshaft and roller valve lifters. Horsepower is 245 at 4000 RPM. Torque is 345 lb./ft. at 3200 RPM. *Chassis Technology* The four-wheel



A Bosch ABS IIS four-wheel anti-lock brake system, combined with a power disc at each wheel, gives Corvette the stopping power and control to complement its performance potential.

independent suspension features a 5-link rear design that helps maximize tire patch contact with the road. Exclusive glass-epoxy transverse front and rear springs, forged aluminum control arms and high-strength uniframe body construction all contribute to Corvette's remarkable poise and balance. The uniframe is 100% galvanized steel.

Optional Bilstein FX3 Selective Ride Control FX3 essentially gives you a range of comfort and cornering capabilities, from softer than the regular Corvette suspension to firmer than the previously available Z51 suspension. The system is operated by means of a rotary dial on the console. There are three settings: Tour, Sport and Perf (Performance), with six different automatic gradations within each mode, depending on the speed of the car and the console setting.



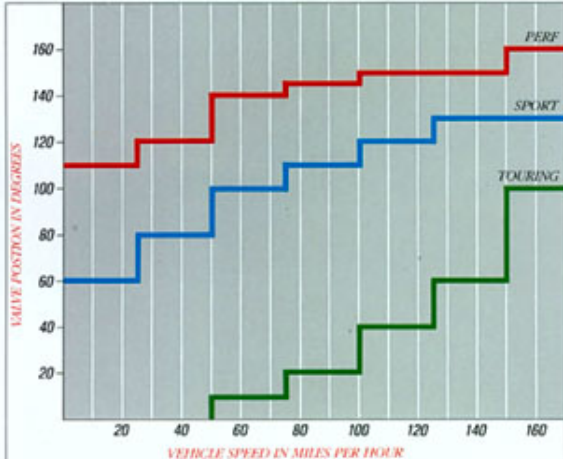
The standard six-speed manual transmission is a smooth-shifting, fully synchronized unit designed to please manual-gearbox fans. A dual-pivoted shifter provides a fast, narrow shift pattern.



The center console houses the Delco/Bilstein Selective Ride Control switch. The optional Delco/Bilstein Selective Ride Control system is programmed for six automatic gradations of firmness within each setting (Tour, Sport, Perf).



A driver-side Supplemental Inflatable Restraint system (air bag) is standard in every 1991 Corvette. It can help protect the driver in certain frontal collisions. Sensors in the engine compartment react



as soon as the car is involved in a moderate to severe frontal impact and instantaneously inflate a protective "air bag" in the steering wheel hub. The air bag is a supplemental system only and was de-



signed for use in conjunction with safety belts. For maximum protection in frontal and all other collisions, all occupants must be properly restrained with safety belts.

Technical Data

ENGINE

5.7 Liter (350 cu. in.) V8 with Tuned-Port Fuel Injection
Block: Cast iron alloy
Cylinder Heads: Cast-aluminum
Valve Lifters: Roller hydraulic
Bore: 4.00" Stroke: 3.48"
Horsepower: 245 net @ 4000 RPM*
Torque: 345 lb.-ft. @ 3200 RPM
Recommended Fuel: Unleaded premium
Fuel Pump: Electric (in tank)
Fuel Tank Capacity (in gals.): 20

TRANSMISSIONS

Choice of standard 4-speed automatic with overdrive or no-cost option 6-speed manual.

SUSPENSION—FRONT

TYPE AND DESCRIPTION
Independent forged-aluminum upper and lower control arms and steering knuckle, transverse monoleaf spring and steel stabilizer, spindle offset.
Spring Type and Material: Monoleaf, filament-wound glass-epoxy composite.

SUSPENSION—REAR

TYPE AND DESCRIPTION
Independent 5-link design with toe and camber adjustment, forged-aluminum control arms, knuckles and struts; transverse monoleaf spring steel tie-rods and stabilizer. Tubular U-jointed drive shafts.
Spring Type and Material: Monoleaf, filament-wound glass-epoxy composite.

BRAKES

TYPE AND DESCRIPTION
Four-wheel power disc, with Bosch ABS IIS four-wheel anti-lock system, Electronic 4-wheel, 3-channel (standard).

WHEELS AND TIRES

Wheel Size and Type: 17x9.5 in. aluminum alloy.
Tire Size and Type: P275/40ZR-17 Goodyear Eagle ZR (unidirectional).*

BODY

STRUCTURE
Integral perimeter-frame birdcage forms unitized body structure.

ANTI-CORROSION TREATMENT
All-encompassing corrosion protection including extensive use of aluminum; galvanization; use of specially treated fasteners; austenitic stainless steel or specially coated brackets, clamps, clips and braces; use of aluminized steel.

FRAME

All-welded steel body-frame construction, 100% galvanized.

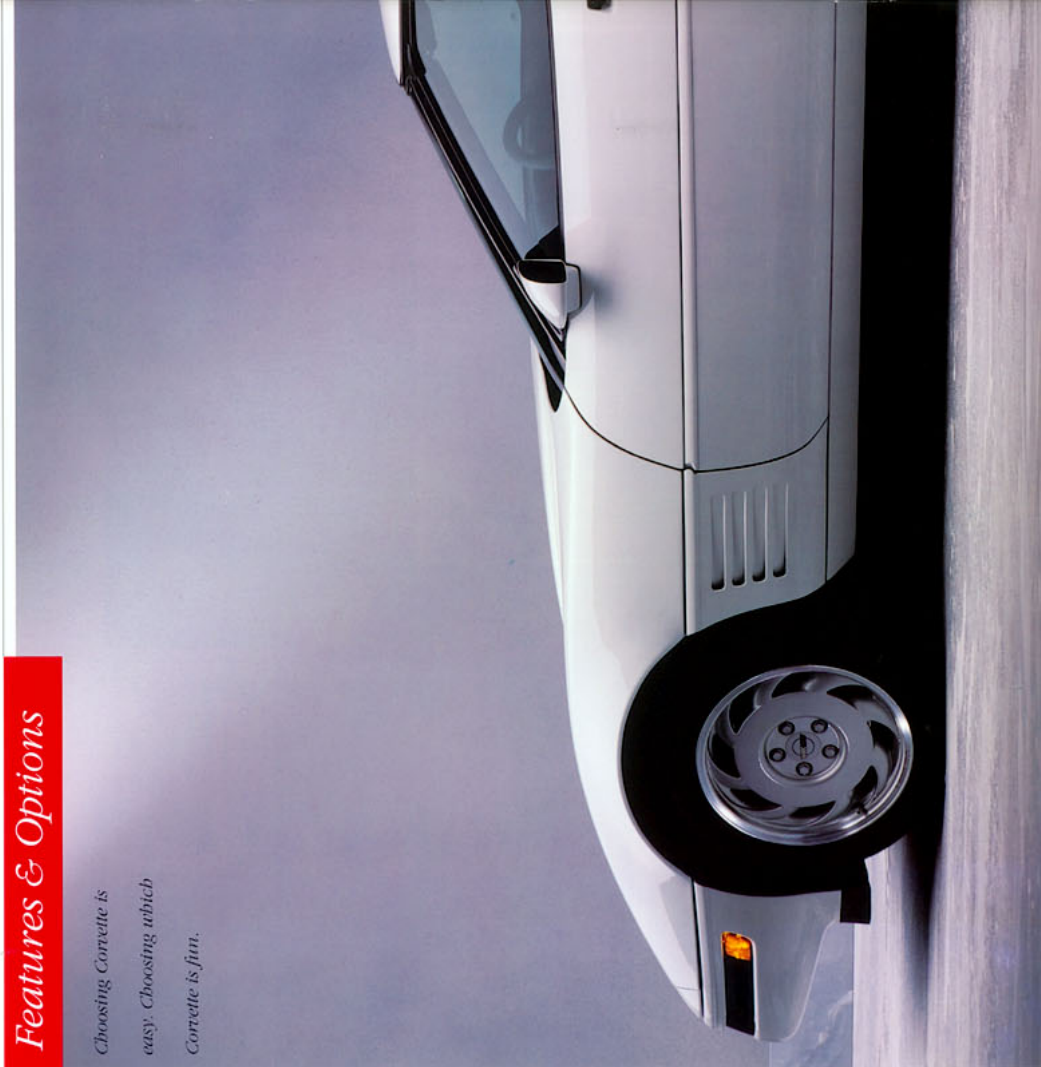
DIMENSIONS

EXTERIOR
Width: 71.0"
Front Tread: 59.6"
Rear Tread: 60.4"
Wheelbase: 96.2"
Overall Length: 178.6"
Height: 46.7"
Minimum Ground Clearance: 4.7"
INTERIOR
Head Room: 36.4" (36.5" Conv.)
Leg Room: 42.6"
Shoulder Room: 54.0"
Hip Room: 49.3"
Cargo Volume: 12.6 cu. ft. (6.6 cu. ft. Conv.)

* Tire chains should not be used because they may cause damage to your car.

Features & Options

*Choosing Corvette is
easy. Choosing which
Corvette is fun.*



The 1991 Corvette can be as hot as a bright red coupe with a six-speed manual transmission, Selective Ride Control, and special performance axle ratio.

The 1991 Corvette can be as cool as a white convertible with leather bucket seats, Delco/Bose stereo sound system, removable hardtop and rear-deck luggage carrier.

Corvette can be all these things, because Corvette offers choices matched by few other sports cars. The standard equipment list is a long one, including features that are optional on many other cars. Things like air conditioning, Delco AM/FM stereo with cassette tape player, Comfortilt steering wheel, removable roof panel (coupe), power windows and heated outside mirrors.

Every Corvette also includes technology unavailable on many other cars — at any price. Examples include the PASS-Key theft-deterrent system, driver's-side Supplemental Inflatable Restraint system (air bag), four-wheel anti-lock braking system, stainless steel exhaust system and corrosion-proof fiberglass body panels.

It's also reassuring to know that Corvette's uniframe/chassis is 100% galvanized steel, and that Corvette is covered by the GM Bumper to Bumper Plus Warranty (see page 32 for details), with service available at nearly 5000 Chevrolet dealers nationwide.

A unique selection of options, including Selective Ride Control and a specifically tuned Delco/Bose sound system, allows you to closely match your Corvette to your style of driving. There's even an optional low-tire-pressure warning system that activates a warning message if pressure is under 25 psi.

In this section you'll also find information on interior seat styles and color availability, convertible top colors and interior/exterior color combinations.

Now you're ready to have some fun — ordering that dream Corvette.

*The car is unique.
So are the choices
that go with it.*

Colors and Trim

A beautiful palette of
paints, cloths and
leathers.

Interior Colors

	Standard Cloth	Leather
BLACK	X	X
BLUE		X
GRAY		X
RED		X
SADDLE	X	X

Interior/Exterior Colors

EXTERIOR COLORS	INTERIOR COLORS				
	BLACK	BLUE	GRAY	RED	SADDLE
BLACK	X	X	X	X	X
MED. QUASAR BLUE MET.	X				X
CHARCOAL MET.	X		X		
STEEL BLUE MET.	X	X			
POLO GREEN MET.	X				X
TURQUOISE MET.	X				X
YELLOW	X		X		
WHITE	X	X	X	X	X
BRIGHT RED	X		X	X	X
DARK RED MET.	X				X

Standard Cloth Seat

Fully reclining bucket seat. Deeply contoured, with sport cloth fabric. Colors: Black, Saddle.

Optional Leather Seat

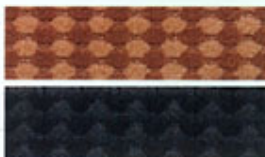
Genuine leather seats are optional at extra cost. Colors: Black, Blue, Gray, Red, Saddle.

Optional Leather Sport Seat

Deeply contoured leather sport seats are optional at extra cost. Features include full power lumbar adjustment. Colors: Black, Blue, Gray, Red, Saddle.

Convertible Top Colors

Black, White, Saddle.



Exterior Colors

BLACK



MED. QUASAR BLUE MET.



CHARCOAL MET.



STEEL BLUE MET.



POLO GREEN MET.



TURQUOISE MET.



YELLOW



WHITE



BRIGHT RED



DARK RED MET.



Standard Features

Everything you expect
to find, and more.



Comfort's steering wheel adjusts to your personal driving style.



An advanced four-wheel anti-lock braking system gives the '91 Corvette stopping power to complement its performance potential.



A sophisticated five-link independent rear suspension is standard on Corvette.

The Corvette Convertible's soft top disappears below a fiberglass panel when lowered. Convertible top colors are black, white or saddle, depending on exterior color selected.



A one-piece removable roof panel is standard on Corvette Coupe.



Standard Delco AM/FM stereo music system includes sub-woofer, cassette tape player, four speakers, automatic power antenna and digital clock.

- INTERIOR**
- o Center console with shifter, coin tray, cigarette lighter and ashtray, plus controls for radio, air conditioning and electric mirrors.
 - o Comforttilt steering wheel.
 - o Day/night rearview mirror with integral map light.
 - o Driver information system providing average MPG and cruising range in digital readouts.
 - o Full instrumentation with multi-colored analog and digital display. Readouts include: speedometer, 6000-RPM tachometer, fuel level, oil pressure, voltmeter, water temperature, instant MPG and range.
 - o Headlamps-on reminder.
 - o High-intensity interior lamps.
 - o Illuminated dual visor mirrors.
 - o Intermittent windshield wipers.
 - o Leather-wrapped steering wheel.
 - o Power door locks.
 - o Power windows.

- ADDITIONAL STANDARD FEATURES**
- Power Team/Chassis/Mechanical**
- o Bosch ABS IS four-wheel anti-lock brake system.
 - o Choice of 6-speed manual transmission or automatic transmission with overdrive fourth gear.
 - o Delco Freedom Plus II battery with sealed side terminals.
 - o Electric engine cooling fan.
 - o Electric in-tank fuel pump.
 - o Exclusive transverse front and rear springs with monoleaf glass-epoxy construction.
 - o 5.7 Liter V8 engine with Tuned-Port Fuel Injection and aluminum cylinder heads.
 - o Forged aluminum front and rear suspension arms.
 - o Fully independent front and rear suspension.
 - o Limited slip differential.
 - o Magnesium engine valve covers.
 - o Single-belt accessory drive.
 - o Power rack-and-pinion steering.
 - o Stainless steel exhaust pipes, catalytic converter, exhaust manifolds, and free-flow mufflers.
 - o Unifram body construction; 100 percent galvanized and dip-painted.

- EXTERIOR**
- o Concealed wipers with integral washers in wiper arms.
 - o Corrosion-proof fiberglass body panels.
 - o Designed-in body-side moldings.
 - o Dual electric remote-controlled heated sport mirrors.
 - o Dual halogen fog lamps.
 - o Frameless rear hatch glass with three remote releases (Coupe).
 - o Front and rear cornering lamps.
 - o Full-tilting clamshell hood.
 - o Retractable halogen headlamps.
 - o Tinted and flush-mounted glass.



AM/FM STEREO WITH CASSETTE TAPE PLAYER
This electronically tuned Delco AM/FM stereo has four stereo speakers, seek-scan, stereo cassette tape player, power antenna and digital clock.

THEFT-DETERENT FEATURES
PASS-Key (Personalized Automotive Security System), the most sophisticated theft-deterent system in Chevrolet history, features an ignition key with a special electronic code. A thief using an improper key would cause the starter system and fuel delivery system to remain inoperative during any attempt to start the engine with the wrong key.
In addition to PASS-Key, a theft-deterent horn alarm circuit is standard on every 1991 Corvette.

ELECTRONIC SPEED CONTROL
Electronic Speed Control includes a convenient resume-speed feature and a speed adjustment that allows you to change your speed in 1-MPH increments.

AIR CONDITIONING
Standard on every Corvette. Climate control system also includes heater, defroster, side-window defoggers and heated outside mirrors. An electric rear-window defogger is standard on Corvette Coupe and included with the Convertible's optional removable hardtop.

UNIDIRECTIONAL ZR40 TIRES
These high-performance Good-year Eagle P275-40ZR17 tires* feature a unidirectional tread pattern for excellent heat and water dissipation. New 17" x 9 1/2" aluminum wheels are standard. *Tire chains should not be used because they may cause damage to this vehicle.

Optional Equipment

A selection of comfort, convenience and performance features you will want to consider...

Delco/Bose AM/FM Stereo Music System with Stereo Cassette Tape Player and Digital Compact Disc Player

o This world-class Delco/Bose music system features four bass reflex amplifier speakers engineered specifically for Corvette (each with its own equalizer network), an AM/FM stereo receiver with automatic adjustment, electronic tuning with seek-scan, Dynamic Noise Reduction (DNR™) and Dolby® Sound Noise Reduction to reduce high-frequency "hiss" on AM/FM and cassette tape.

o The cassette tape player includes automatic reverse (radio functions while cassette rewinds and music search feature).

o The integral compact disc player includes digital readouts, repeat function and search-and-scan.

o A Speed Compensated Volume Control feature automatically increases radio volume as the speed of the car increases.

Delco/Bose AM/FM Stereo Music System with Stereo Cassette Tape Player

This Delco/Bose system is similar to the above music system, with the exception that it does

not include a compact disc player.

Selective Ride Control

Selective Ride Control is the ultimate Corvette suspension option. This computerized system allows the driver to select one of three suspension settings (Touring, Sport or Performance) via a console-mounted switch. Within each of the three settings, ride firmness automatically increases as speed increases.

Electronic Air Conditioning
This electronic control system features easy-to-use, color-coded push buttons and a digital temperature adjuster. Once set, the temperature is automatically maintained. A display registers outside temperature.

Leather Sport Seats

Aggressively contoured leather sport seats include a six-way power adjustment and full-power lumbar adjustment.

Low Tire Pressure Warning System

A transmitter in each tire is designed to measure tire pressure and activate a warning message if pressure is under 25 psi.

Additional Optional Equipment

- o Axle Performance-ratio vertible
- o Removable Handcap (Convertible)
- o Seats, leather-trimmed
- o Seats, power six-way adjustment
- o Transparent roof panel (Coupe only).



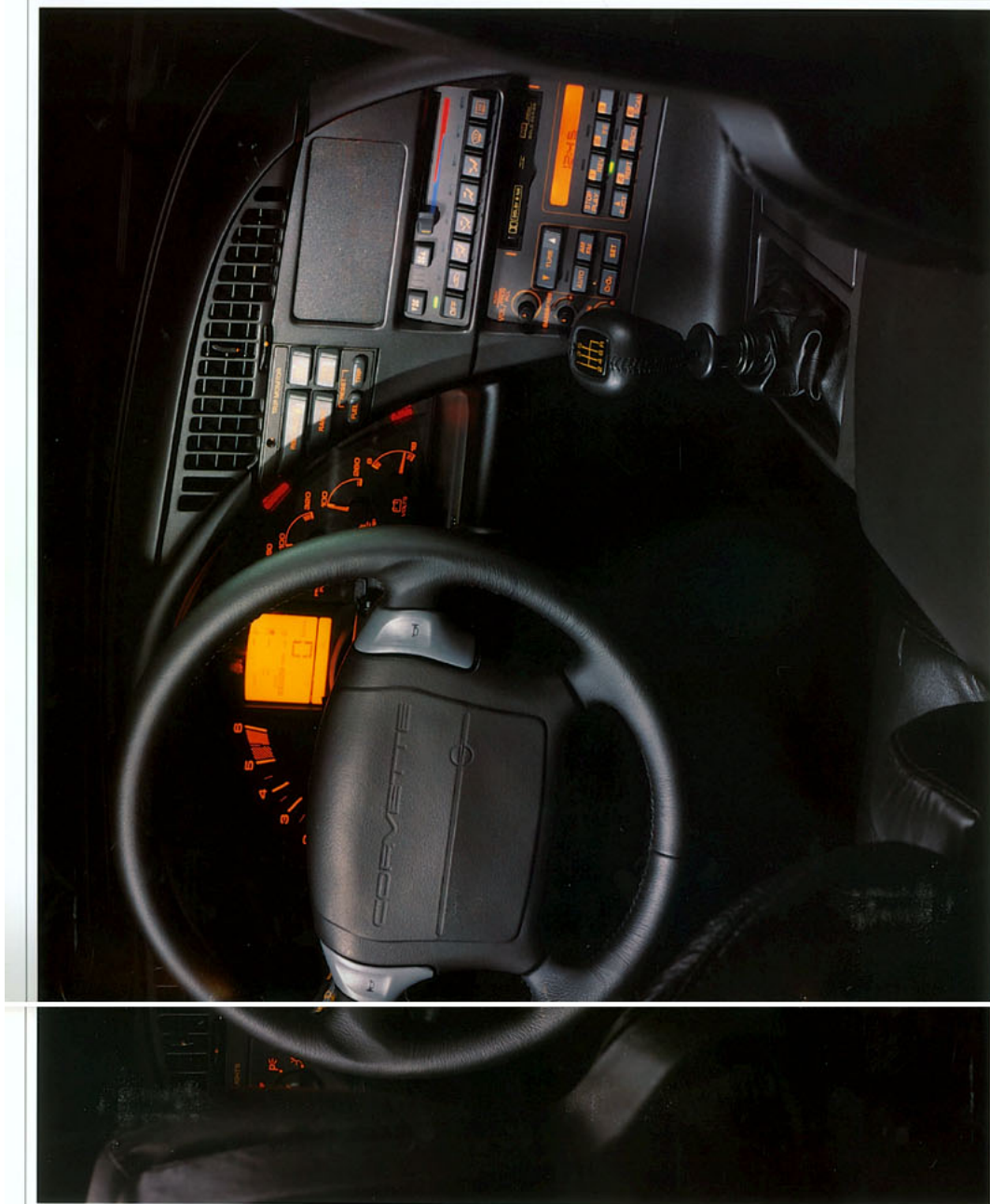
Electronic Air Conditioning is a fully automatic climate control system, just set the temperature, and enjoy Corvette performance.



The optional transparent inset roof panel gives Corvette Coupe occupants a view of the sun and stars.



The available Delco/Bose music system features a stereo cassette tape player and digital compact disc player.



Additional Information

SAFETY FEATURES

OCCUPANT PROTECTION

Supplemental Inflatable Restraint, driver only, with manual lap/shoulder safety belts for the driver and right front passenger — includes visual and audible warning system • Energy-absorbing steering column • Energy-absorbing instrument panel • Interlocking door latches • Side-guard door beam • Passenger-guard inside door lock handles • Safety armrests • Head restraints, driver and right front passenger (integral) • Breakaway inside rearview mirror • Security door lock and door retention components.

ACCIDENT AVOIDANCE

Side marker lamps and reflectors • Parking lamps that illuminate with headlamps • Four-way hazard warning flashers • Backup lamps • Center high-mounted stop lamp • Directional signal control with lane-change feature • Windshield defroster, washer and multi-speed wipers (pulse-type) • Inside rearview mirror • Dual electric remote outside rearview mirrors • Brake system with dual master cylinder and warning light • Starter safety switch • Low-glare finish on inside windshield moldings, wiper arms and blades • Illuminated heater and defroster controls • Tires with built-in tread wear indicators.

IMPORTANT: A WORD ABOUT THIS CATALOG

We have tried to make this catalog as comprehensive and factual as possible. We reserve the right, however, to make changes at any time, without notice, in prices, colors, materials, equipment specifications, models and availability. Since some information may have been updated since the time of printing, please check with your Chevrolet dealer for complete details.

A WORD ABOUT ENGINES

Chevrolets are equipped with engines produced by different operating units of GM, its subsidiaries or suppliers to GM worldwide.

A WORD ABOUT ASSEMBLY

Chevrolets are assembled by different operating units of General Motors, its subsidiaries or suppliers to GM worldwide. Chevrolet incorporates thousands of components produced by different operating units of GM, its subsidiaries or suppliers to GM worldwide. We sometimes find it necessary to produce Chevrolets with different or differently sourced components than originally scheduled. All such components have been approved for use in Chev-

rolets and will provide the quality performance associated with the Chevrolet name. Since some options may be unavailable when your vehicle is assembled, we suggest that you verify that your vehicle includes the equipment you ordered, or if there are changes, that they are acceptable to you.

A WORD ABOUT UPDATED SERVICE INFORMATION

Chevrolet regularly sends its dealers useful service bulletins about Chevrolet products. Chevrolet monitors product performance in the field. We then prepare bulletins for servicing our products better. Now you can get these bulletins, too. Ask your dealer. To get ordering information, call toll-free 1-800-551-4123.

A WORD ABOUT CORROSION PROTECTION

Chevrolets are designed and built to resist corrosion. All body sheet metal components are warranted against rust-through corrosion for 6 years/100,000 miles. Application of additional rust-inhibiting materials is not required under the corrosion coverage.



GM's 3-year/50,000-mile limited warranty covers repairs for the 1991 Corvette, including labor and parts, to correct any defects in material or workmanship occurring during the warranty period. After the first year or 12,000 miles, there is a \$100 deductible per repair visit. Warranty features include air conditioning repair, towing, no-cost warranty transfer, 6-year/100,000-mile body sheet rust-through protection and 5-year/50,000-mile emissions control system coverage. Items not covered include tires (which are covered by their manufacturer) and normal maintenance. See your Chevrolet dealer for terms of this limited warranty. At your Chevrolet dealer's, financing or leasing your new Corvette can be as easy as saying GMAC.

Let's get it together...
buckle up.



General Motors, GM, the GM emblem, Chevrolet, Corvette and the Corvette emblem are registered trademarks and Chevy is a trademark of the General Motors Corporation.

©1990 General Motors Corporation. All rights reserved.
Litho in U.S.A. 5030 July 1990



*The
Heartbeat*

of America is winning.

Today's Chevrolet.

