

DATSUN SPORTS *Fairlady*



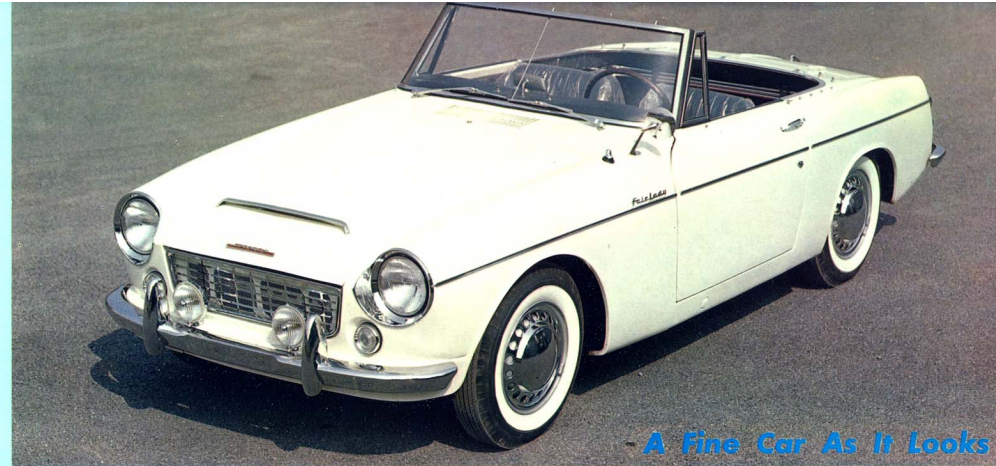
New Exciting Sports Car

for Pleasure and Ordinary Town Driving... **DATSUN Fairlady**



Speed and safety are incorporated in the new DATSUN Sports Car. As you drive down the highway, you have the assurance of complete control and complete safety even at its highest speed. It can get up to 150 km/h (93 MPH) with the powerful 1500cc engine. The newly designed brake insures firm and sure stop under all road conditions.

The DATSUN Sports Car is engineered for the pleasure and thrill of fun-driving plus the convenience and ability of ordinary town driving.



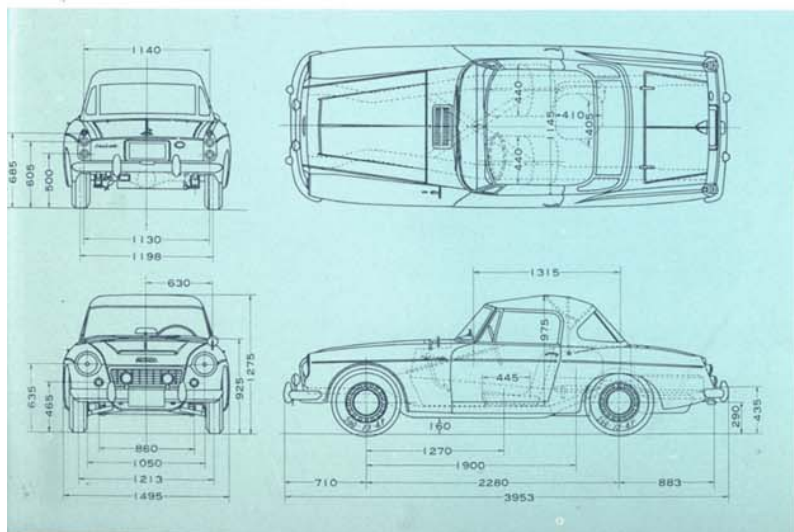
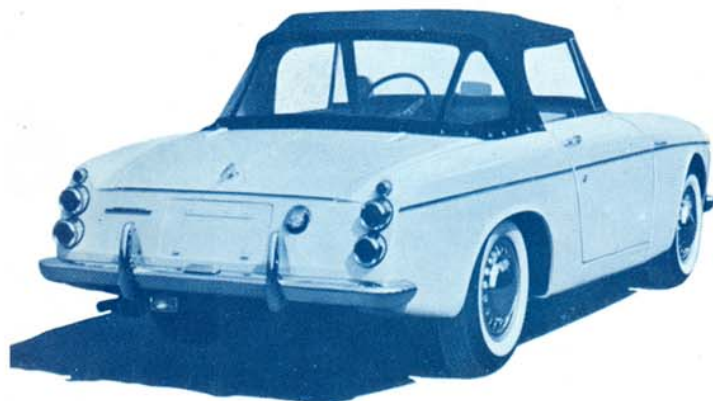
A Fine Car As It Looks



The instruments are neatly arranged in line in front of the driver seat for clear visibility. From left to right, the combination meter, tachometer, speedometer and clock. The racing steering wheel is a standard equipment. The remote control gear change lever is installed on the carpeted floor.



With the canvas top



SPECIFICATIONS

MODEL: SP(L) 310-U

DIMENSIONS AND WEIGHT:

Overall length	3953 mm	(155.6 ins.)
Overall width	1495 mm	(58.9 ins.)
Overall height	1275 mm	(50.2 ins.)
Wheel base	2280 mm	(89.8 ins.)
Tread front	1213 mm	(47.8 ins.)
Tread rear	1198 mm	(47.1 ins.)
Vehicle weight	870 kg	(192 lbs)
Seating capacity	3 persons	
Min. road clearance	160 mm	(6.3 ins)
Gross vehicle weight	1035 kg	(2180 lbs)

PERFORMANCE:

Max. speed	150 km/h	(93 mile/h)
Max. grade ability (sin θ)	0.515	
Min. turning radius	4.9 m	(16 ft.)
Brake distance (at 50 km/h)	14.3 m	(46.8 ft.)

ENGINE: Model G; Gasoline engine, water cooled four-cycle, O.H.V. four cylinder in line, bore 80mm (3.15 ins.), stroke 74 mm (2.91 ins), cubic capacity 1488 cc (90.7 cu. in); Max. B.H.P. 77 at 5200 rpm. (S.A.E. rating), Max torque 12 kg·m at 3600 rpm. (87 ft-lbs) (SAE rating); Compression ratio 8.0

FUEL SYSTEM: "Hitachi HJB-38" Variable venturi sidedraft type carburetter; Mechanical type diaphragm pump; Paper element type air cleaner; Fuel tank capacity 43 l (11.3 US gal.)

LUBRICATION SYSTEM: Pressure feed with full flow type oil filter; Gear type pump.

IGNITION SYSTEM: Coil and distributor with automatic mechanical and vacuum advancer.

COOLING SYSTEM: Pressurized radiator with centrifugal pump, thermostat and fan; Cooling water capacity 6.5 l (1.7 US gal)

ELECTRIC SYSTEM: 12 volt 40 ampere-hours capacity battery; 300 watt generator with carbonpile voltage regulator; 1.4 HP starter motor.

CLUTCH: Single dry disc with cushioning spring; Face area 312.3 cm² (48.5 in²).

TRANSMISSION: 4 speeds forward and 1 reverse; Synchromesh on 2nd 3rd, 4th gear; Gear ratio 1st 3.945, 2nd 2.402, 3rd 1.490, 4th 1.000, Reverse 5.159; Floor gear shift.

REAR AXLE: Semi-floating axle; Hypoid bevel gear, ratio 3.889.

FRONT SUSPENSION: Independent wishbones, coil spring with hydraulic double action type shock absorbers; Torsion bar stabilizer.

REAR SUSPENSION: Semi-elliptic leaf-type spring 2 leaves with hydraulic double action type shock absorbers.

STEERING: Cam and lever type, ratio 14.8; Steering wheel 3 spokes 400 mm (15.7 ins.) diameter.

BRAKE: Hydraulic; Two leading shoe on front, leading and trailing shoe on rear; Brake drum diameter 228.6 mm (9 ins.); Lining area 702 cm² (109 in²); Parking brake mechanically operated on rear wheels only.

WHEELS AND TIRES: Steel disc wheels, 5.60-13-4P tires.

LAMPS: Twin head lamps; Twin front parking and flashing trafficator lamps; Twin fog lamps; Twin tail and stop lamps; Twin rear flashing trafficator lamps; Rear license lamp; Map lamp, Reverse lamp.

INSTRUMENTS: Speedometer with mileage recorder; Tachometer; Combined meter (fuel meter, thermometer, oil pressure warning pilot lamp, ignition warning pilot lamp); Clock; Trafficator pilot lamp; Main beam warning pilot lamp; Instrument panel also includes ignition and starter switch, lighting switch, choke control knob and windshield wiper switch.

FRAME: Pressed steel box section with X member.

BODY WORK: Two-door, three-seater, open type all steel body fully upholstered with vinyl leather; Floor carpet; Safety glass windshield and doors; Plastic rear window; Adjustable bucket-type front seat; Anchorage for fitting safety belt; Ash tray and glove box on instrument panel; Fresh air control; Door lock with key; Bumper overrider front and rear; Spare wheel housed in trunk room; Mid-point side jacking.

EQUIPMENTS: Windshield wiper; Windshield washer; Cigarette lighter; Double horn; Inside and outside back mirrors; Tonneau cover.

OPTIONAL EQUIPMENTS: Heater; Radio,

These specifications are subject to change without notice.



NISSAN MOTOR CO., LTD.

FOREIGN TRADE DIVISION

Otemachi Bldg., Otemachi, Chiyoda-ku, Tokyo, Japan

PRINTED IN JAPAN Publication. No. PE 611-210153