



The
current
range of
Jaguar
cars

The most complete
range in the world of
high performance motoring



"Jaguar holds a unique place among the motor cars of the world, on the intrinsic merits of its products coupled with their extremely reasonable price". thus wrote "Financial Times" when summarising on Jaguar. Powered by the world famous Jaguar 'XK' engine, five times winner of Le Mans, and with each model pre-eminent in its own particular field, the Jaguar range represents the most compelling and comprehensive selection of high performance cars available anywhere in the world.



Jaguar 240 Saloon



ENGINE. 2.4 litre, six cylinder 'XK' engine, twin overhead camshafts, twin carburettors, 83 mm bore x 76.5 mm stroke, capacity 2483 cc, 133 bhp at 5,500 rpm. Compression ratios: 8 : 1 or optional 7 : 1.

TRANSMISSION. (Manual) four-speed all-synchromesh gearbox; gear change lever on floor between front seats. (Overdrive) as above, with addition of a Laycock de Normanville overdrive controlled by lever on steering column. (Automatic) Borg Warner Type 35 automatic transmission with dual drive range. Selector lever on steering column.

SUSPENSION. (Front) independent suspension—semi-trailing wishbones, coil springs with telescopic shock absorbers. (Rear) live axle with cantilever semi-elliptic springs, radius arms, Panhard rod, telescopic shock absorbers.

BRAKES. Servo-assisted disc brakes featuring quick-change pads.

STEERING. Re-circulating ball type.

WHEELS AND TYRES. Pressed steel bolt-on disc wheels, Dunlop 6.40 x 15½ n. tyres.

FUEL SUPPLY. 12 Imperial gallon tank. S.U. electric pump.

ELECTRICAL EQUIPMENT AND INSTRUMENTS. 12-volt electrical system. Extensive equipment including headlamp flashing unit, reversing lamp, twin-blade two-speed windscreen wipers, windscreen washers, cigar lighter, all fitted as standard. Comprehensive instrumentation to Jaguar normal high standards.

BODY. All steel four-door five-seater saloon. Seats upholstered in ambla material over deep Dunlopillo cushions. Armrests fitted to front and rear doors. Central folding armrests in rear compartment. Tufted carpets over felt underlay, 13½ cubic feet capacity luggage boot.

HEATING AND DEMISTING. High output system with separate heating duct to rear compartment. Two-speed booster fan.

SPARE WHEEL AND TOOLS. Spare wheel housed beneath boot floor, comprehensive set of tools. Jack and wheelbrace.

PRINCIPAL DIMENSIONS. Wheelbase 8 ft. 11½ in., track front 4 ft. 7 in., track rear 4 ft. 5½ in., overall length 15 ft. 0½ in., overall width 5 ft. 6½ in., overall height 4 ft. 9½ in., turning circle 33½ ft.



Jaguar XJ6

2.8 litre

Saloon

(Standard and De Luxe models)



ENGINE. 2.8 litre, in-line six-cylinder, twin overhead camshaft engine with straight port type cylinder head, twin S.U. H.D.8 carburettors with automatic enrichment for cold starting, and dual exhaust system. 83 mm bore x 86 mm stroke. Cubic capacity 2792 cc developing 180 bhp at 6000 rpm and 182 lb/ft torque at 3,750 rpm. Compression ratio 9:1.

TRANSMISSION. (Manual) four-speed all-synchromesh gearbox; gear change lever on floor between front seats. (Overdrive) as above, with addition of Laycock overdrive unit—hydraulically operated and electrically controlled by sliding switch in the gear lever knob. (Automatic) Borg Warner Model 35 unit with D-2-1 control system. Selector lever mounted between the front seats operates in a sliding gate.

SUSPENSION. (Front) independent suspension with wishbones, coil springs, separate telescopic dampers, front anti-roll bar. The suspension geometry is designed to give anti-dive characteristics. (Rear) fully independent suspension incorporating, on each side, a lower transverse tubular link pivoted at the wheel carrier and at subframe adjacent to differential case. Above this, a half-shaft universally jointed at each end. Twin coil springs each enclose a telescopic hydraulic damper.

BRAKES. Servo-assisted disc brakes all round, self-adjusting umbrella type handbrake. Independent hydraulic circuits to front and rear.

STEERING. Collapsible steering column. Rack and pinion steering, now further developed to take power assistance. (Optional extra on standard model.)

WHEELS AND TYRES. Pressed steel bolt-on wheels, 6 in. wide rims. Dunlop low profile S.P. Sport radial ply, E 70 VR 15 tyres featuring unique "anti-aquaplaning" tread pattern.

FUEL SUPPLY. Two separate tanks with flush fitting, lockable filler caps. Total capacity 23 gallons. Two S.U. electric pumps. Changeover switch on instrument panel.

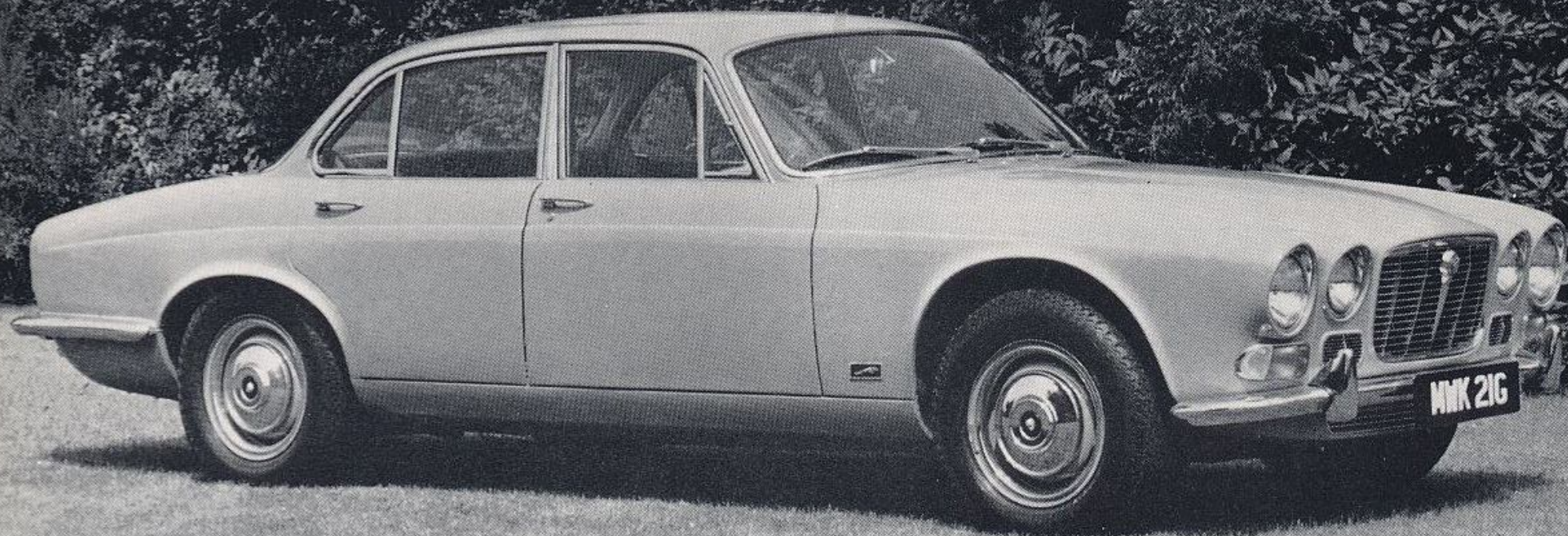
ELECTRICAL EQUIPMENT AND INSTRUMENTS. Alternator, 12-volt battery with negative earth system. Extensive equipment includes headlamp flashing unit, reversing lamps, flashing direction indicators doubling as hazard warning lights, twin-blade two-speed windscreen wipers, windscreen washers, cigar lighter, map reading lamp, all fitted as standard. Comprehensive instrumentation.

BODY. All steel four-door 4/5 seater. Pleated upholstery and safety padding. Front seats have combined height and reach adjustment and reclining squabs. Floors fully carpeted over thick felt underlay. Burst-proof locks, child-proof safety catches on rear doors. 17 cubic feet capacity luggage boot.

HEATING AND DEMISTING. Face level directional air ducts. Separate rear compartment ducts (except standard model). Automatic control of air input temperature selected by multi-position switch. Two-speed flow fans. Adjustable screen demister vents. Jaguar 'Posivent' air extraction system.

SPARE WHEEL AND TOOLS. Spare wheel housed beneath boot floor, set of tools in roll-case. Jack and wheelbrace.

PRINCIPAL DIMENSIONS. Wheelbase 9 ft. 0½ in., track front 4 ft. 10 in., track rear 4 ft. 10½ in., overall length 15 ft. 9½ in., overall width 5 ft. 9½ in., overall height 4 ft. 4½ in., turning circle 36 ft.



Jaguar XJ6

4.2 litre

Saloon



ENGINE. 4.2 litre, in-line six cylinder, twin overhead camshaft engine with straight port cylinder head, twin S.U. H.D.8 carburettors, automatic enrichment control, and dual exhaust system. 92.07 mm bore x 106 mm stroke. Cubic capacity 4235 cc developing 245 bhp at 5,500 rpm and 283 lb/ft torque at 3,750 rpm. Compression ratio 8 : 1.

TRANSMISSION. (Manual) four-speed all-synchromesh gearbox; gear change lever on floor between front seats. (Overdrive) as above, with addition of Laycock overdrive unit—hydraulically operated and electrically controlled by sliding switch in the gear lever knob. (Automatic) Borg Warner Model 8 unit with D1/D2 control system. Selector lever mounted between the front seats operates in a slide-gate.

SUSPENSION. (Front) independent suspension with wishbones, coil springs, separate telescopic dampers, front anti-roll bar. The suspension geometry is designed to give anti-dive characteristics. (Rear) fully independent suspension incorporating, on each side, a lower transverse tubular link pivoted at the wheel carrier and at sub-frame adjacent to differential case. Above this, a half-shaft universally jointed at each end. Twin coil springs each enclose a telescopic hydraulic damper.

BRAKES. Servo-assisted disc brakes all round, self-adjusting umbrella type handbrake. Independent hydraulic circuits to front and rear.

STEERING. Rack and pinion steering with power assistance. Collapsible steering column.

WHEELS AND TYRES. Pressed steel bolt-on wheels, 6 in. wide rims. Dunlop low profile S.P. Sport radial ply E 70 VR 15 tyres featuring unique "anti-aquaplaning" tread pattern.

FUEL SUPPLY. Two separate tanks with flush fitting, lockable filler caps. Total capacity 23 gallons. Two S.U. electric pumps. Changeover switch on instrument panel.

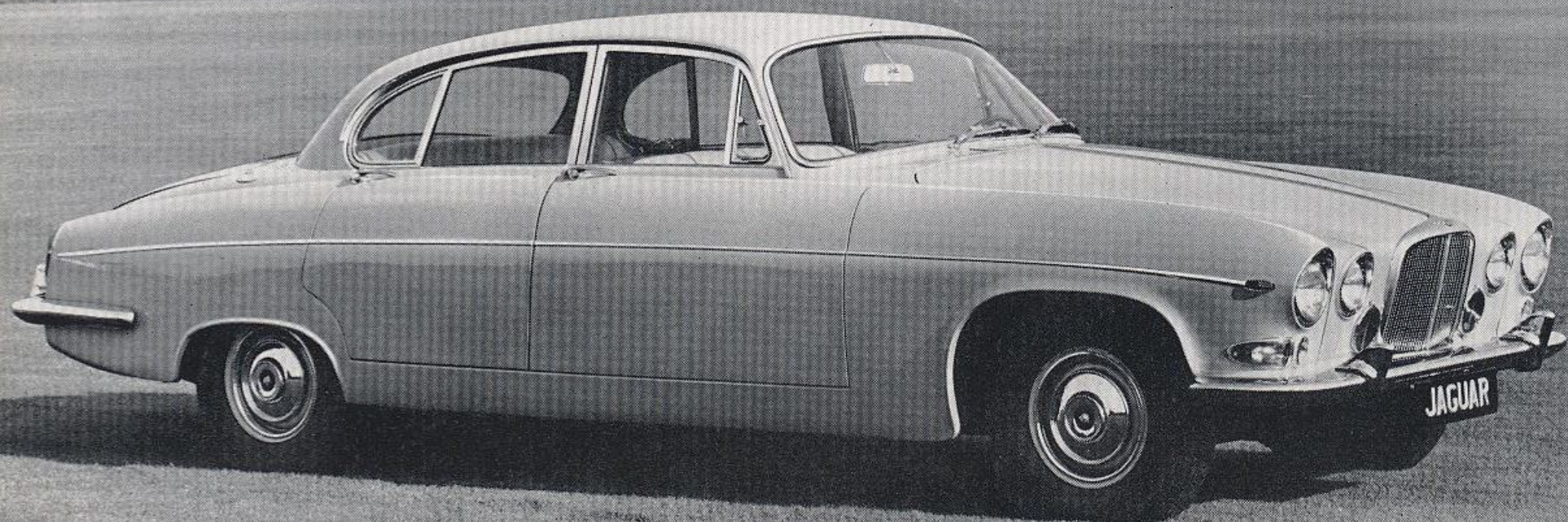
ELECTRICAL EQUIPMENT AND INSTRUMENTS. Alternator, 12-volt battery with negative earth system. Extensive equipment includes headlamp flashing unit, reversing lamps, flashing direction indicators doubling as hazard warning lights, twin-blade two-speed windscreen wipers, windscreen washers, cigar lighter, map reading lamp, all fitted as standard. Comprehensive instrumentation.

BODY. All steel four-door 4/5 seater. Seats upholstered in quality leather hide over deep Dunlopillo cushions. Front seats have combined height and reach adjustment and reclining squabs. Rear central folding armrest and rear door pockets. Deep pile carpets over thick felt underlay. Burst-proof door locks. 17 cubic feet capacity luggage boot.

HEATING AND DEMISTING. Face level directional air ducts. Separate duct behind centre console for rear compartment. Automatic control of air input temperature selected by multi-position switch. Two-speed flow fans. Adjustable screen demister vents. Jaguar 'Posivent' air extraction system.

SPARE WHEEL AND TOOLS. Spare wheel housed beneath boot floor, set of tools in roll-case. Jack and wheelbrace.

PRINCIPAL DIMENSIONS. Wheelbase 9 ft. 0½ in., track front 4 ft. 10 in., track rear 4 ft. 10½ in., overall length 15 ft. 9½ in., overall width 5 ft. 9½ in., overall height 4 ft. 4½ in., turning circle 36 ft.



Jaguar 420 'G'

4.2 litre

Saloon

The largest model in the Jaguar saloon car range



ENGINE. Six cylinder 4.2 litre 'XK' engine with twin overhead camshafts and three carburettors. 92.07 mm bore x 106 mm stroke. Capacity 4235 cc, 255 bhp at 5,400 rpm. Compression ratio 8 : 1. New cooling system incorporates cross-flow tube and fin radiator block, fluid drive speed-control fan and improved design water pump.

TRANSMISSION. (Manual) four-speed all synchromesh gearbox; gear change lever on floor between front seats. (Overdrive) as above, with addition of a Laycock de Normanville overdrive controlled by lever on steering column. (Automatic) Borg Warner Model 8 automatic transmission with dual drive range D1/D2. Selector lever on steering column.

SUSPENSION. (Front) independent suspension—double wishbones, coil springs with telescopic shock absorbers. (Rear) fully independent suspension incorporating, on each side, a lower transverse link pivoted at wheel carrier and subframe adjacent to differential case and, above this, a half-shaft universally jointed at each end. Twin coil springs each enclose a telescopic hydraulic damper.

BRAKES. Servo-assisted disc brakes all round. Independent hydraulic circuits to front and rear. Self-adjusting handbrake.

STEERING. "Varamatic" variable ratio power steering 2.75 turns lock to lock.

WHEELS AND TYRES. Pressed steel bolt-on disc wheels. Dunlop 205 mm x 14 in. SP41 tyres and tubes.

FUEL SUPPLY. Twin tanks, total capacity 20 gallons. Twin electric pumps. Separate concealed fillers. Changeover switch on facia panel.

ELECTRICAL EQUIPMENT AND INSTRUMENTS. Alternator generator. 12-volt battery with negative earth system. Extensive equipment includes four headlamp system, headlamp flashing unit, twin reversing lamps, map reading lamp, continental side wipers, cigar lighter, twin-blade two-speed windscreen wipers, windscreen washers, automatic ignition advance, transistorised clock, all fitted as standard. Comprehensive instrumentation to Jaguar normal high standards.

BODY. All steel four-door five-seater saloon. Luxurious upholstery in ventilated leather hide over deep Dunlopillo cushions. Central folding armrests front and rear. Reclining front seats with flush fitting picnic trays in backs of squabs. Deep pile carpets over thick felt underlay. Padded safety screen rail. 27 cubic feet capacity luggage boot.

HEATING AND DEMISTING. High output system. Regulation for temperature, volume and direction of air for each side of saloon. Separate ducting to rear compartment.

SPARE WHEEL AND TOOLS. Spare wheel housed in luggage boot and fully trimmed to protect luggage. Comprehensive set of tools.

PRINCIPAL DIMENSIONS. Wheelbase 10 ft., track front 4 ft. 10 in., track rear 4 ft. 10 in., overall length 16 ft. 10 in., overall width 6 ft. 4 in., overall height 4 ft. 6½ in., turning circle 37 ft.



ENGINE. Six cylinder 4.2 litre 'XK' engine with twin overhead camshafts and three carburettors. 92.07 mm bore x 106 mm stroke. Capacity 4235 cc, 265 bhp at 5,400 rpm. Compression ratio 9:1 (8:1 optional). Cross flow radiator, "No loss" cooling system with thermostatically controlled, electrically driven twin fans.

TRANSMISSION. Manually operated four-speed all-synchromesh gearbox. Improved Helix angle for quieter running.

SUSPENSION. (Front) independent suspension—transverse wishbones and torsion bars and telescopic hydraulic dampers. (Rear) fully independent suspension incorporating, on each side, a lower transverse tubular link pivoted at wheel carrier and subframe adjacent to differential case and, above this, a half-shaft universally jointed at each end. Twin coil springs each enclose a telescopic damper.

BRAKES. Servo-assisted disc brakes all round. Independent hydraulic circuits to front and rear brakes.

STEERING. Rack and pinion steering. Collapsible steering column. 2½ turns lock to lock. Power assisted steering optional extra.

WHEELS AND TYRES. Wire spoke wheels with centre lock hubs. Dunlop SP Sport tyres and tubes. Optional pressed-steel wheels available.

FUEL SUPPLY. 14 Imperial gallon capacity tank. S.U. electric pump.

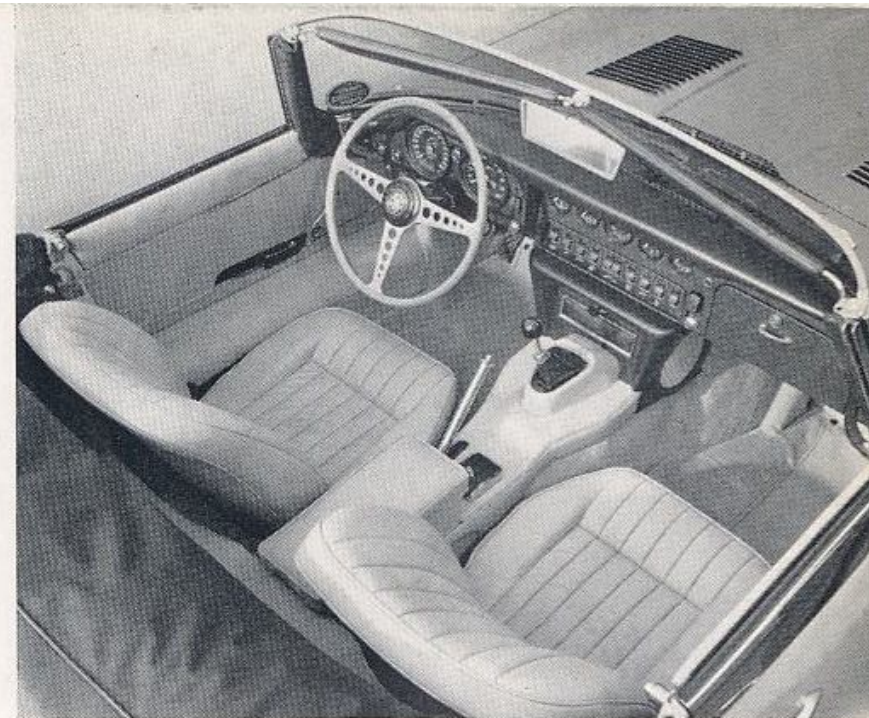
ELECTRICAL EQUIPMENT AND INSTRUMENTS. Alternator generator. 12-volt battery with negative earth system. Pre-engaged starter motor. Extensive standard equipment includes sealed beam headlamps and headlamp flashing unit, map reading lamp, reversing lamps, flashing direction indicators doubling as hazard warning lights, triple blade two-speed windscreen wipers, windscreen washers, cigar lighter, transistorised clock, automatic ignition advance and comprehensive instrumentation to Jaguar normal high standards.

BODY. Stressed steel two-door two-seater body of monocoque construction. Folding hood with large rear window. (Hard top available as optional extra). Twin semi-reclining bucket seats upholstered in finest quality leather hide over deep Dunlopillo cushions. Deep pile carpets over thick felt underlay.

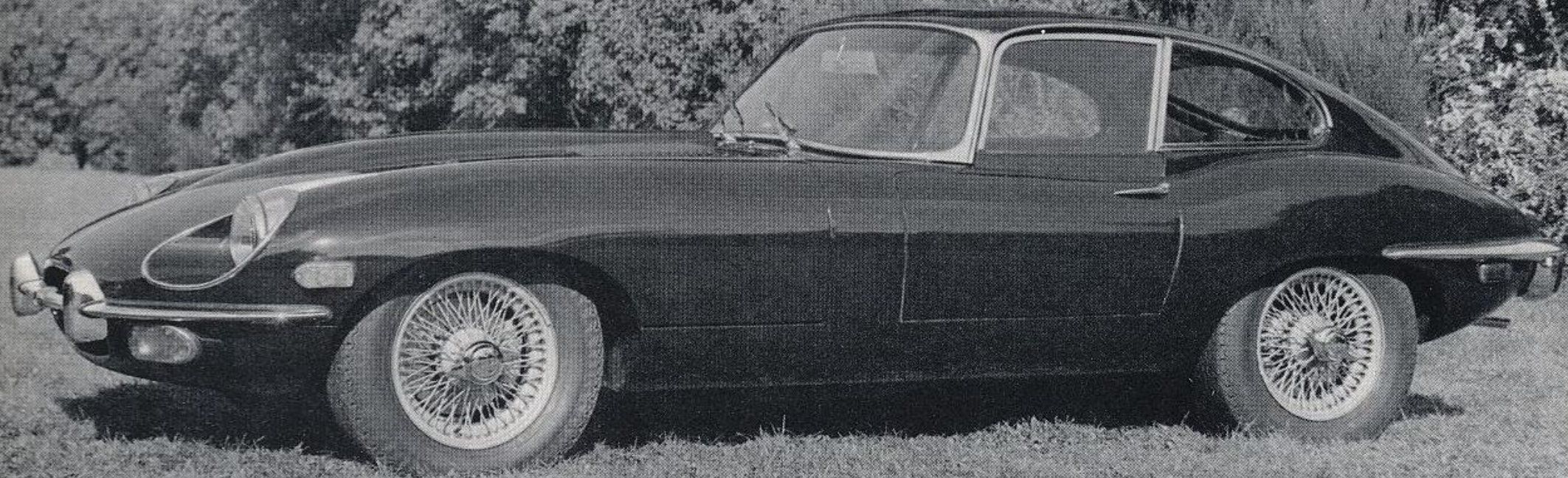
HEATING AND DEMISTING. High output fresh air heating and multi-point windscreen demisting system. Ducts direct air to each side of car. Two-speed fan.

SPARE WHEEL AND TOOLS. Spare wheel housed beneath boot floor. Comprehensive set of tools. Screw-type easy-lift jack.

PRINCIPAL DIMENSIONS. Wheelbase 8 ft., track front and rear 4 ft. 2 in., overall length 14 ft. 7½ in., overall width 5 ft. 5½ in., overall height 4 ft. 0 in., turning circle 37 ft.



Jaguar 'E' Type series 2 Open Two Seater



Jaguar 'E' Type series 2 Fixed Head Coupé

ENGINE. Six cylinder 4.2 litre 'XK' engine with twin overhead camshafts and three carburettors. 92.07 mm bore x 106 mm stroke. Capacity 4235 cc, 265 bhp at 5,400 rpm. Compression ratio 9:1 (8:1 optional). Cross flow radiator, "No loss" cooling system with thermostatically controlled, electrically driven twin fans.

TRANSMISSION. Manually operated four-speed all-synchromesh gearbox. Improved Helix angle for quieter running.

SUSPENSION. (Front) independent suspension—transverse wishbones and torsion bars and telescopic hydraulic dampers. (Rear) fully independent suspension incorporating, on each side, a lower transverse tubular link pivoted at wheel carrier and subframe adjacent to differential case and, above this, a half-shaft universally jointed at each end. Twin coil springs each enclose a telescopic damper.

BRAKES. Servo-assisted disc brakes all round. Independent hydraulic circuits to front and rear brakes.

STEERING. Rack and pinion steering. Collapsible steering column. 2½ turns lock to lock. Power assisted steering optional extra.

WHEELS AND TYRES. Wire spoke wheels with centre lock hubs. Dunlop 185 mm x 15 in. SP41 HR tyres and tubes. Optional pressed-steel wheels available.

FUEL SUPPLY. 14 Imperial gallon capacity tank. S.U. electric pump.

ELECTRICAL EQUIPMENT AND INSTRUMENTS. Alternator 12-volt battery with negative earth system. Pre-engaged starter motor. Extensive standard equipment includes sealed beam headlamps and headlamp flashing unit, map reading lamp, reversing lamps, flashing direction indicators doubling as hazard warning lights, triple-blade two-speed windscreen wipers, windscreen washers, cigar lighter, transistorised clock, and comprehensive instrumentation to Jaguar normal high standards.

BODY. Stressed steel two-door two-seater body of monocoque construction. Twin bucket seats upholstered in finest quality leather hide over deep Dunlopillo cushions. Deep pile carpets over thick felt underlay.

HEATING AND DEMISTING. High output fresh air heating and multi-point windscreen demisting system. Ducts direct air to each side of car. Two-speed fan.

SPARE WHEEL AND TOOLS. Spare wheel housed beneath boot floor. Comprehensive set of tools. Screw-type easy-lift iack.

PRINCIPAL DIMENSIONS. Wheelbase 8 ft. 0 in., track front and rear 4 ft. 2 in., overall length 14 ft. 7½ in., overall width 5 ft. 5½ in., overall height 4 ft. 0 in., turning circle 37 ft.



Jaguar series 2 'E' Type 2 + 2 Fixed Head Coupé



ENGINE. Six cylinder 4.2 litre 'XK' engine with twin overhead camshafts and three carburettors. 92.07 mm bore x 106 mm stroke. Capacity 4235 cc, 265 bhp at 5,400 rpm. Compression ratio 9 : 1 (8 : 1 optional). Pressurised cooling system with thermostatically controlled twin electric fans.

TRANSMISSION. (Manual) four-speed all-synchromesh gearbox. Centrally positioned gear change lever. (Automatic) Borg Warner Model 8 with dual drive range, D1/D2.

SUSPENSION. (Front) independent by transverse wishbones and torsion bars with telescopic hydraulic dampers. (Rear) fully independent, having, on each side, a lower transverse tubular link pivoted at the rear wheel carrier and subframe adjacent to differential case and, above this, a half-shaft universally jointed at each end. Twin coil springs each enclose a telescopic damper.

BRAKES. Servo-assisted disc brakes all round. Independent hydraulic circuits to front and rear brakes.

STEERING. Rack and pinion steering 2.85 turns lock to lock. Collapsible steering column.

WHEELS AND TYRES. Wire spoke wheels with centre lock hubs. Dunlop SP Sport tyres and tubes. Optional pressed-steel wheels available.

FUEL SUPPLY. 14 Imperial gallons capacity tank. S.U. electric pump.

ELECTRIC EQUIPMENT AND INSTRUMENTS. Alternator, 12-volt battery with negative earth system. Pre-engaged starter motor. Extensive standard equipment includes sealed beam headlamps and headlamp flashing unit, reversing lamps, map reading lamp, flashing direction indicators doubling as hazard warning lights, cigar lighter, twin-blade two-speed windscreen wiper, windscreen washers, transistorised clock and comprehensive instrumentation to Jaguar normal high standards.

BODY. Two-door, stressed steel monocoque body incorporating four seats fully upholstered in finest quality leather hide over deep Dunlopillo cushions. Top section of rear seat squab moves forward, extending boot floor to give 25% more luggage space when car is used as two-seater. Deep pile carpets over thick underlay.

HEATING AND DEMISTING. High output fresh air heating system gives rapid defrosting and demisting of windscreen. Variable direction nozzles controlled individually by front seat occupants.

SPARE WHEEL AND TOOLS. Spare wheel housed beneath boot floor. Comprehensive set of tools. Screw-type easy-lift jack.

PRINCIPAL DIMENSIONS. Wheelbase 8 ft. 9 in., track front and rear 4 ft. 2 in., overall length 15 ft. 4½ in., overall width 5 ft. 5½ in., overall height 4 ft. 2 in., turning circle 41 ft.

The issue of this catalogue does not constitute an offer.
The specifications in this brochure vary for different countries
and Jaguar Cars Ltd. reserve the right to amend specifications
at any time without notice.

ISSUED BY THE PUBLICITY DEPARTMENT, JAGUAR CARS LTD., COVENTRY, ENGLAND.

Printed in England by Buckler and Webb Ltd., Birmingham, 3 10.68

